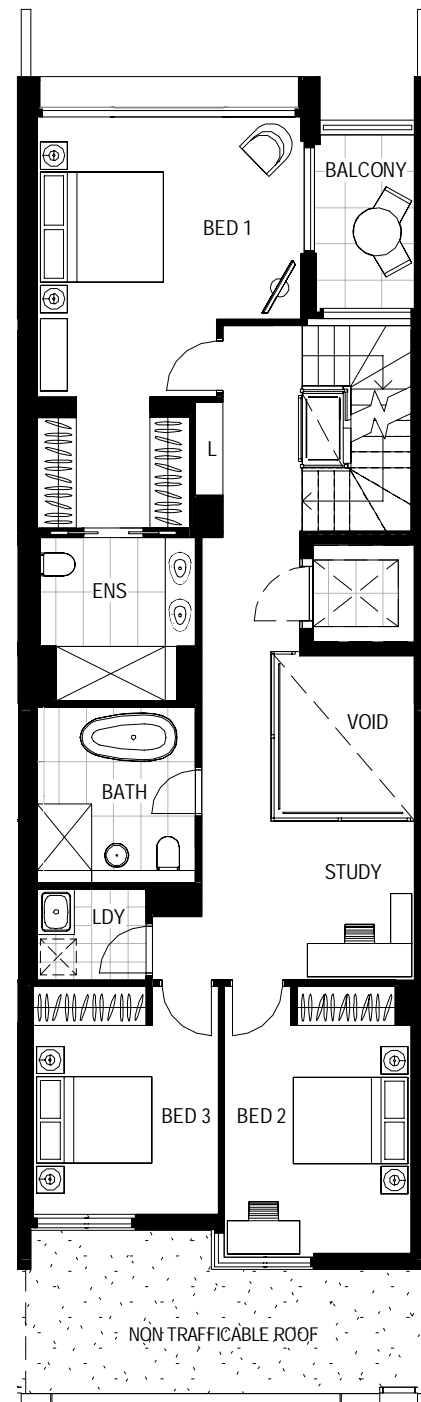
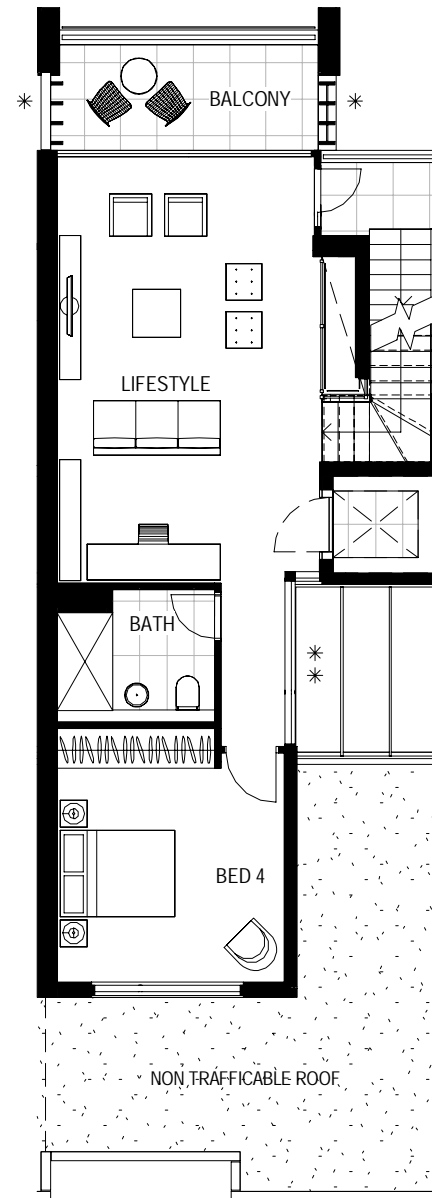


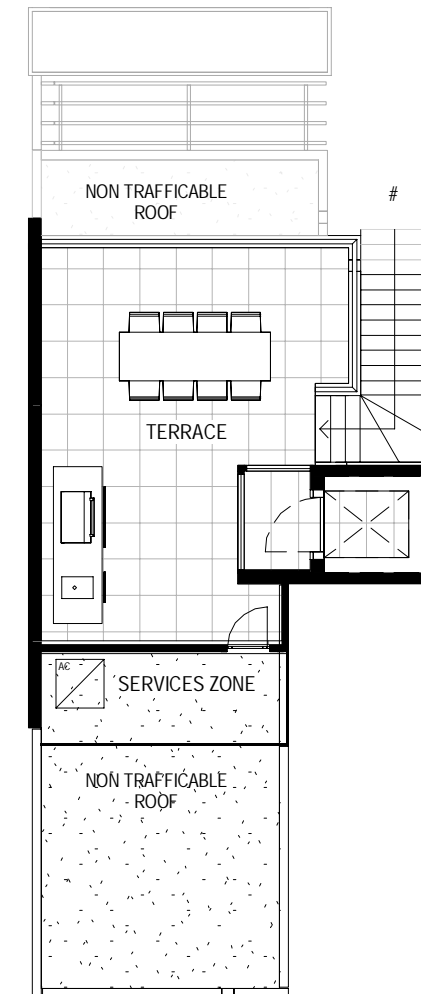
GROUND FLOOR



LEVEL 1



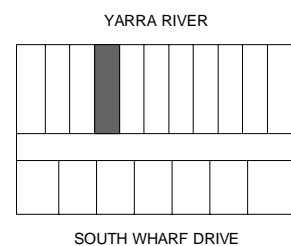
LEVEL 2



LEVEL 3

Lot 26

LOCATION PLAN

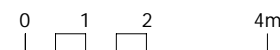


WHARFSIDE RESIDENCE  
MIDDLE LOT - TYPE A  
LIFT TO 4 LEVELS

Internal Area 296 m<sup>2</sup>  
Balcony Area 61 m<sup>2</sup>  
Garage 39 m<sup>2</sup>

Total Area 396 m<sup>2</sup>

Areas are subject to final survey. Balcony Area includes balcony, courtyard, terrace and external stair (where applicable).



Please note that this floor plan was produced prior to completion of construction. The information contained herein is believed to be correct but is not guaranteed. Dimensions and areas are approximate and areas are calculated in accordance with the Property Council of Australia Method of Measurement. Changes will undoubtedly be made during development and subject to change without notice in accordance with the provisions of the contract for sale. Special condition 10 of the contract for sale includes further information in relation to the size of the lot to be transferred. The furniture and furnishings depicted are not included with any sale and furnishings should not be taken to indicate the final position of power points, TV connection points and the like, prospective purchasers must refer to the contract for sale for the list of inclusions. All graphics, including tile layout, balustrades, planting, louvres and sunshading devices, are indicative only.  
NOTE : Bulkheads necessary for services are not depicted. Floor plans are at an unspecified scale. Plans do not show additional features within each lot such as hot water systems, downpipes, service yards, letterboxes, side and rear retaining walls and precast panel joints. Purchaser option noted on floor plans is located on some lots only and is available at purchaser cost only at time of sale.

24.09.2015 [A]

- \* PRIVACY SCREEN
- \*\* GLAZED ROOF
- # EXTERNAL STAIR

For further enquiries  
call 03 9695 9400 or visit  
[we.mirvac.com/cargohomes](http://we.mirvac.com/cargohomes)

