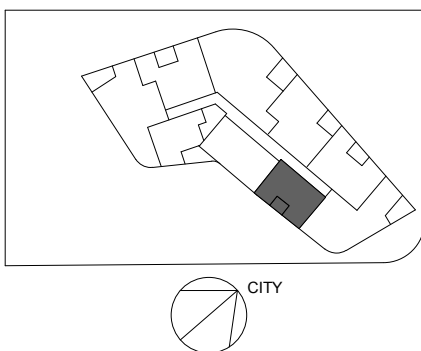


# Forge

APARTMENTS

- \*\*\*\* APT 8.07
- \*\*\*\* APT 9.07
- \*\*\*\* APT 10.07
- \*\*\*\* APT 11.07
- \*\*\*\* APT 12.07
- \*\*\*\* APT 13.07
- \*\*\*\* APT 14.07
- \*\*\*\* APT 15.07
- \*\*\*\* APT 16.07
- \*\*\*\* APT 17.07
- \*\*\*\* APT 18.07
- \*\*\*\* APT 19.07
- \*\*\*\* APT 20.07
- \*\*\*\* APT 21.07
- \*\*\*\* APT 22.07
- \*\*\*\* APT 23.07
- \*\*\*\* APT 24.07

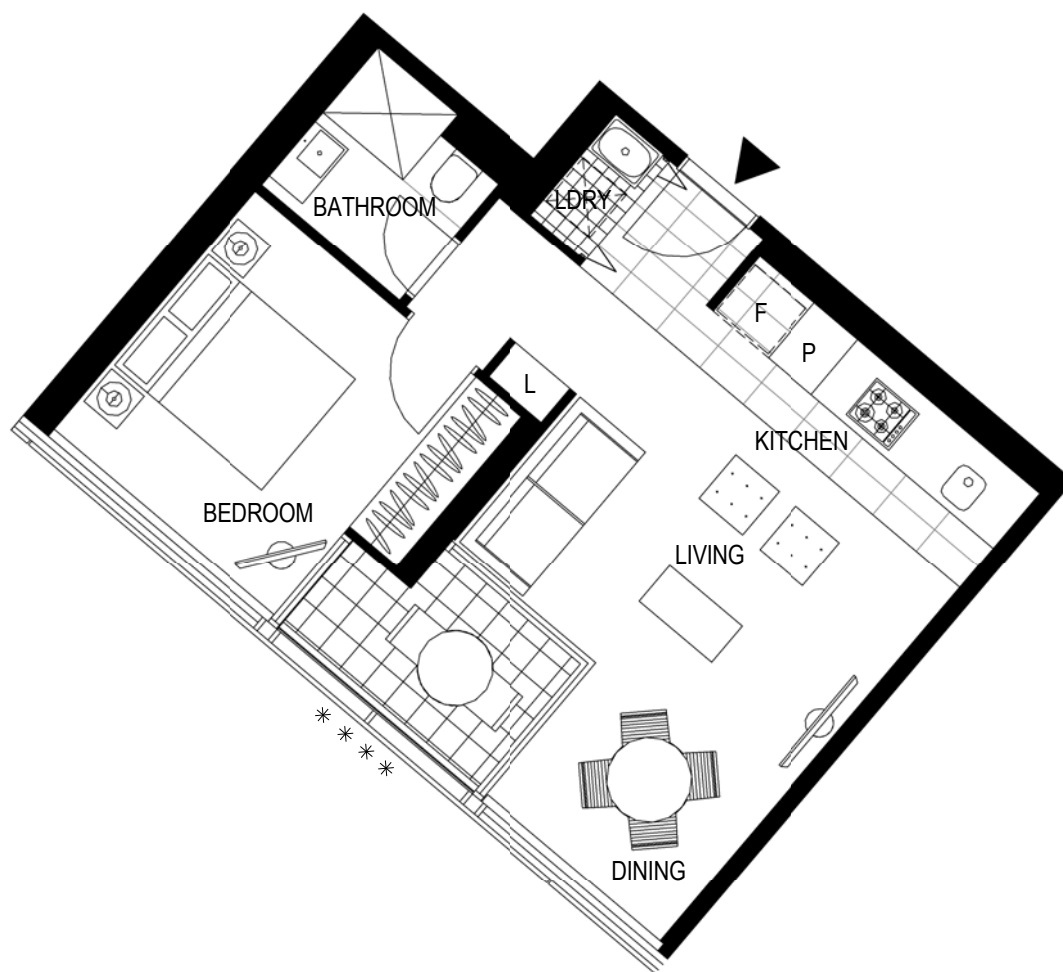
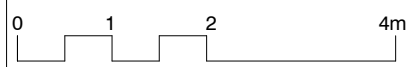
## LOCATION PLAN



## TOWER 1 BEDROOM

Internal Area	51 m <sup>2</sup>
Balcony Area	5 m <sup>2</sup>
<b>Total Area</b>	<b>56 m<sup>2</sup></b>

Areas subject to final survey, area includes balcony and/or terrace where applicable. It excludes parking and external storage areas.



LEVEL 8, 9, 10, 11, 12, 13, 14, 15, 16, 17, 18, 19, 20, 21, 22, 23, 24

Please note that this floor plan was produced prior to completion of construction. The information contained herein is believed to be correct but is not guaranteed. Dimensions and areas are approximate and areas are calculated in accordance with the Property Council of Australia Method of Measurement. Changes will undoubtedly be made during development and subject to change without notice in accordance with the provision of the contract for sale. The furniture and furnishings depicted are not included with any sale and purchasers should not be taken to indicate the final position of power points, TV connection points and the like, prospective purchasers must refer to the contract for sale for the list of inclusions. All graphics, including tile layout, balustrades, planting, louvres and sunshading devices, are indicative only.

NOTE : Bulkheads necessary for services are not depicted. Floor plans are at an unspecified scale. Plans do not show additional features within each lot such as hot water systems, service yards, letterboxes and side and rear retaining walls. Purchaser option noted on floor plans is located on some lots only and is available at purchaser cost only at time of sale.

22/08/14 [A]

\*\*\*\* Wintergarden - louvers

For further enquiries  
call 03 9695 9400 or visit  
[we.mirvac.com/forge](http://we.mirvac.com/forge)

